



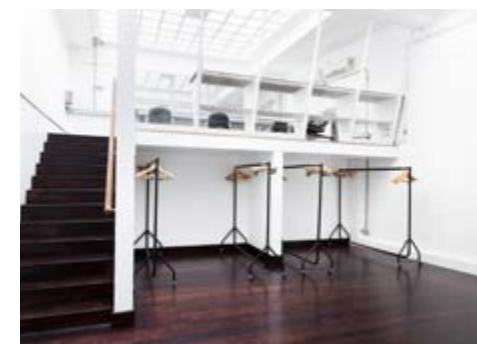
Mezzanine dining



Mezzanine lounge



Mezzanine kitchen



Hair, make up and styling

Our second largest studio, Studio 02 features:

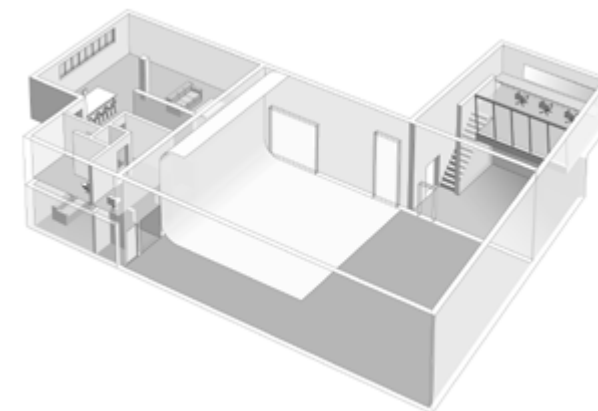
- 9.5m wide infinity cove
- Hair, makeup and styling room
- Kitchen and dining mezzanine
- Toilets and shower

Total area:
380 sqm / 4,090 sqft

Ceiling height:
5.2m / 17.1ft (floor to rig)

Cove width x depth x height:
9.5m / 31.1ft x 8.7m / 28.6ft x 6.5m / 21.4ft

See floorplan below for further info



Studio 02

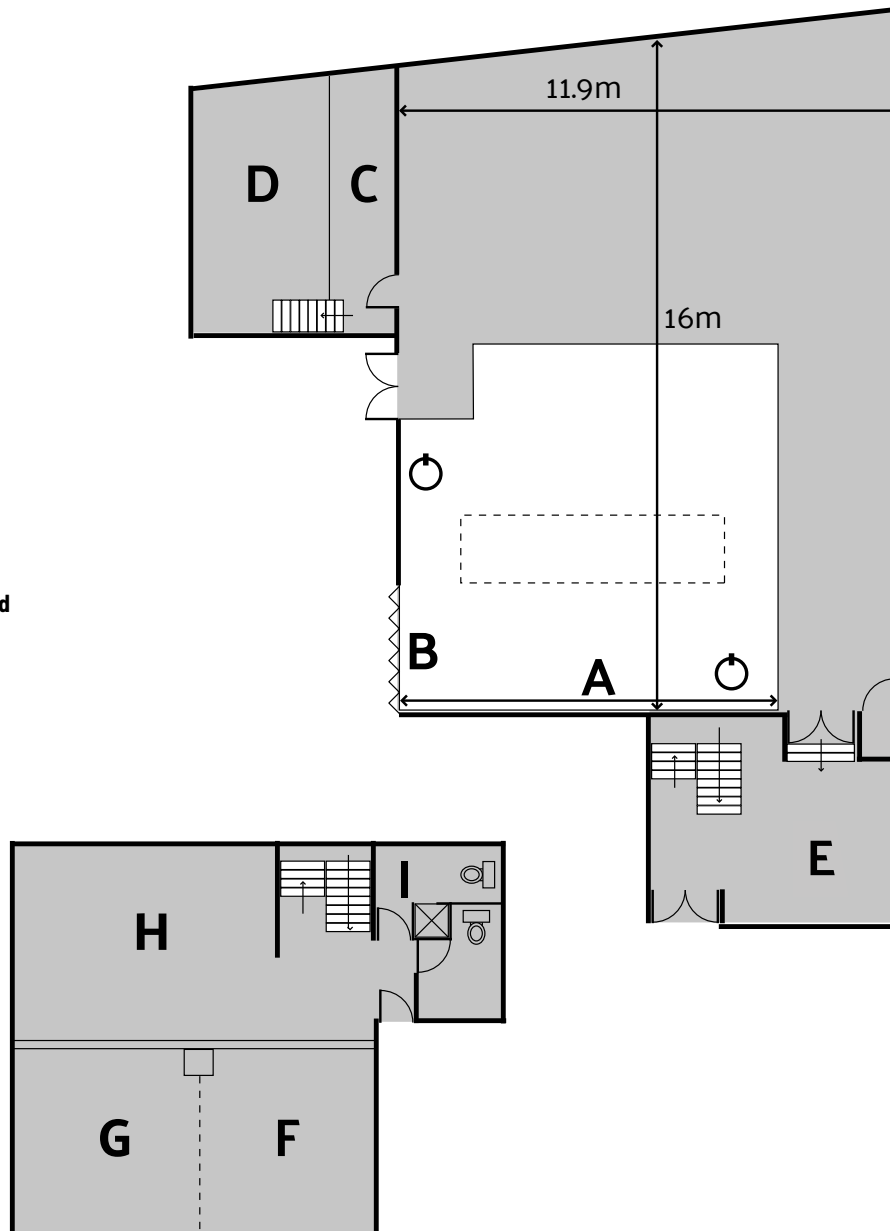
380 sqm / 4,090 sqft

Lighting rig

10 ton certified loading capacity
(1 ton per square metre)

Power - 1 x 200 amp three phase feed

1 x 125 amp three phase outlets
or 6 x 63 amp single phase outlets



A Wrap over cove

9.5m width x 8.7m depth x 6.5m height
31.1ft width x 28.6ft depth x 21.4ft height

B Shutter Doors

(Can connect to Studio 01)

C Styling room

4.9m x 5.4m
16.2ft x 17.8ft

D Hair and makeup area

4.2m x 5.4m
13.9ft x 17.8ft

E Lounge

Mezzanine floor

F Dining area

G Kitchen

H Lounge

I Toilets and shower