



Hair and makeup



Styling



Mezzanine kitchen & dining



VIP mezzanine

Our largest on site, Studio 01 features:

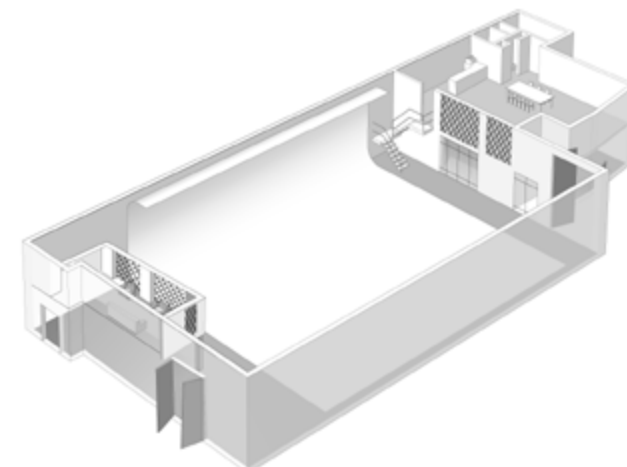
- 16.7m wide infinity cove
- Drive-in access (3m x 4.9m)
- Hair and makeup area
- Styling and dressing room
- Mezzanine dining, lounge & kitchen
- VIP mezzanine
- Toilets and showers

Total area:
569 sqm / 6,192 sqft

Ceiling height:
5.2 m / 17 ft (floor to rig)

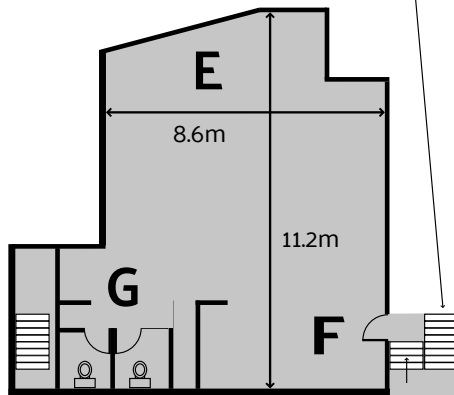
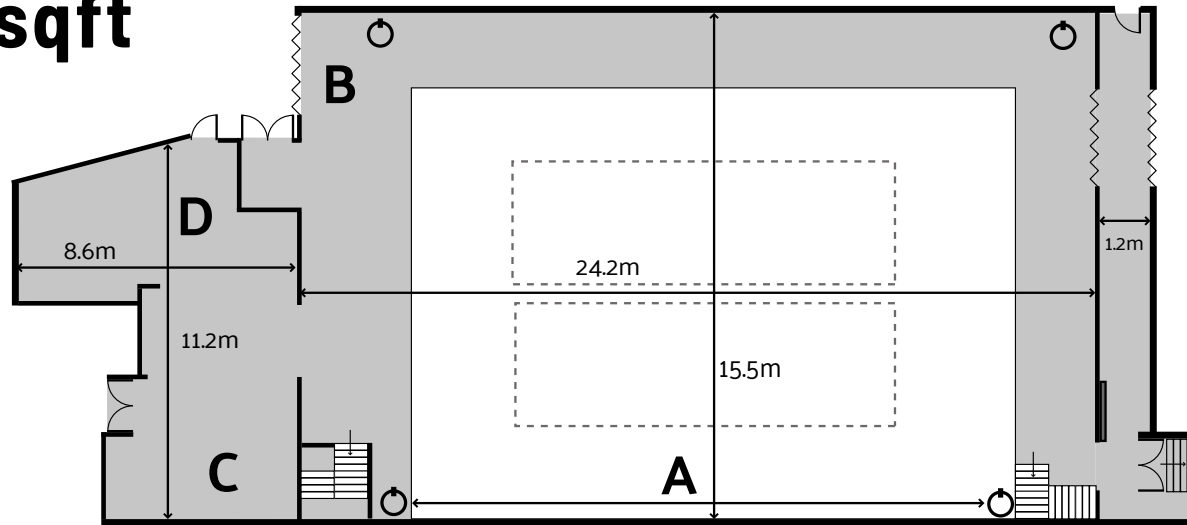
Cove width x depth x height:
16.7 m / 54.7 ft x 11.7 m / 38.5 ft x 5.2 m / 17ft



See floorplan below for further info

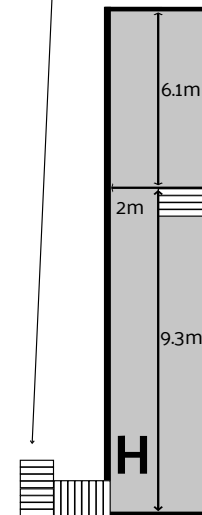


Studio 01

569 sqm /
6,192 sqft



-  **Lighting rig**
20 ton LOLER certified rig
(1 ton max per sqm)
-  **Power - 2 x 200 amp 3 phase feeds**
Feed 1 - 175 amp 3 phase Powerlock
or 6 x 63 amp single phase Cee Norm outlets
Feed 2 - 9 x 63 amp single phase
Cee Norm outlets (3 in rig)



- A Wrap over cove**
16.7m width x 11.7m depth x 5.2m height
54.7ft width x 38.5ft depth x 17ft height
- B Drive-in access:**
3m wide x 3m high
9.9ft high x 9.9ft high
- C Styling and dressing room**
4.9m x 5.4m
16.2ft x 17.8ft
- D Hair and makeup area**
4.2m x 5.4m
13.9ft x 17.8ft
- E Mezzanine lounge and dining:**
8.6m x 9.2m
28.2ft x 30.1ft
- F Kitchen area**
- G Toilets & shower**
- H VIP mezzanine**