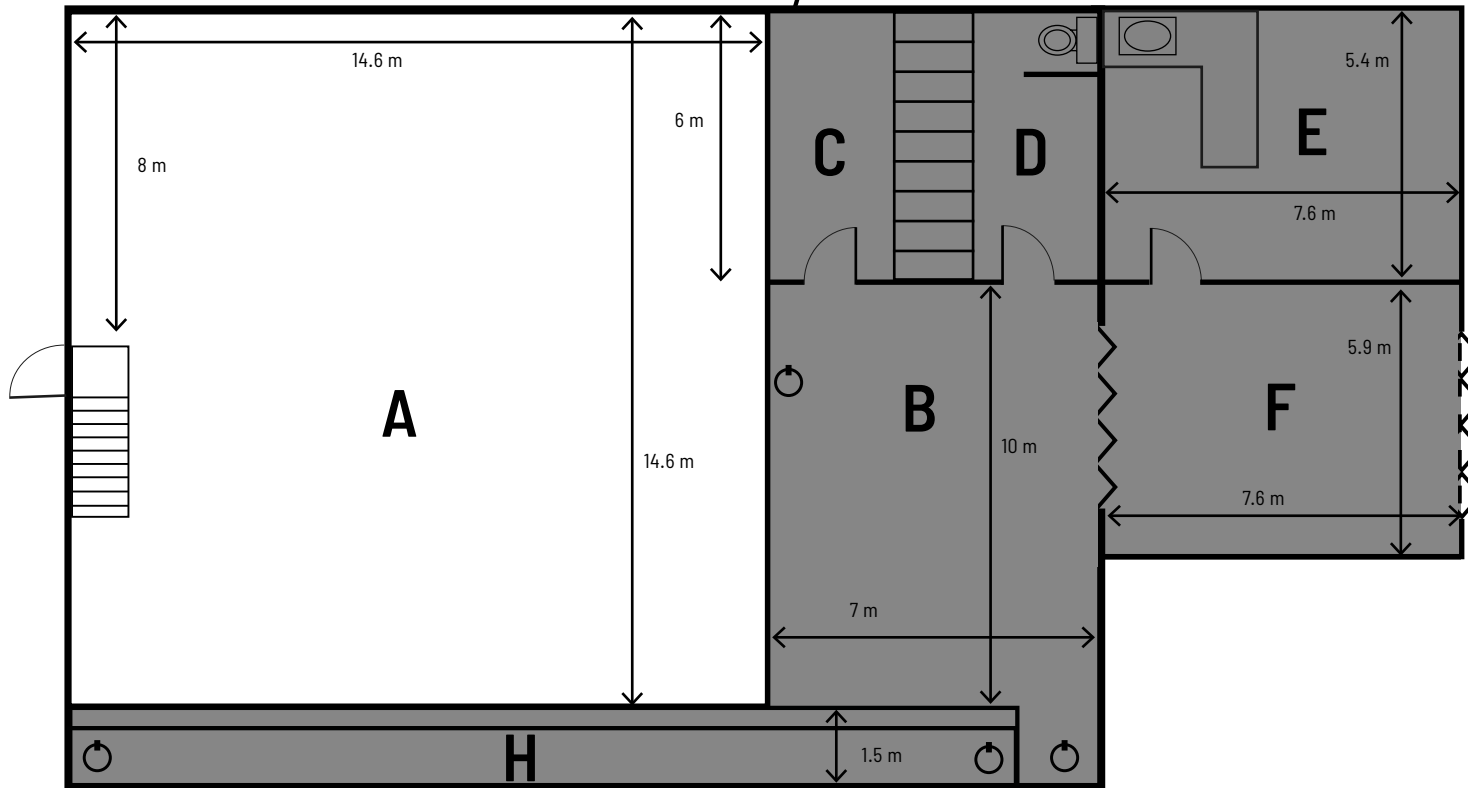
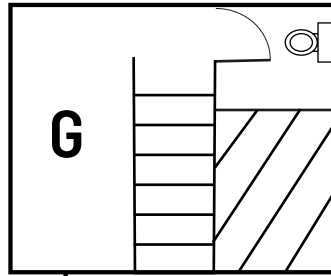


# Studio 10

520 sqm /  
5,600 sqft



**A Cove**  
Total area: 233 sqm / 2500 sqft  
Ceiling height: 6.10m / 20ft  
Deep: 15.25m / 50ft  
Wide: 15.25m / 50ft

**B Lounge & Dining Area**  
Total area: 49 sqm / 161 sqft

**C Styling Room**

**D Backwash sink & Toilet**

**E Kitchen**  
Total area: 41 sqm / 135 sqft

**F Loading Bay**  
Total area: 45 sqm / 148 sqft

⊖ **Power**  
9 x 63 amp single phase outlets  
1 x 125 amp single phase outlets

**G Upstairs Makeup, Styling & Toilet**

**H Step**