

The Roof

322.5 sqm / 3,430 sqft

Booking enquiries
production@bigskylondon.com
T: 020 7619 6600



View North



View West



View South



Space B

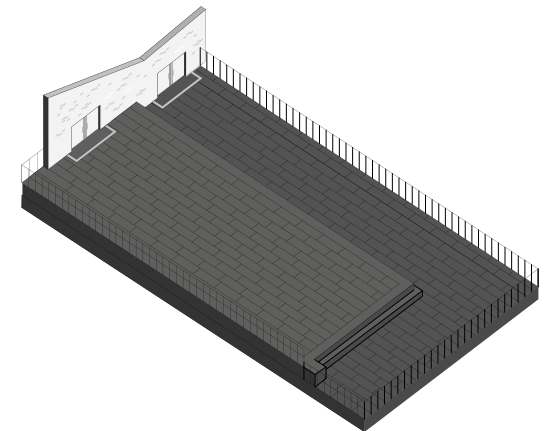
The Roof

- Panoramic view of the London skyline
- Includes hire hair and make up Space B
- Unfiltered daylight
- Mains supply
- Hyperion® WPC Decking made from recycled materials
- Direct access to Space B

Total area:
322.5 sqm / 3,430 sqft

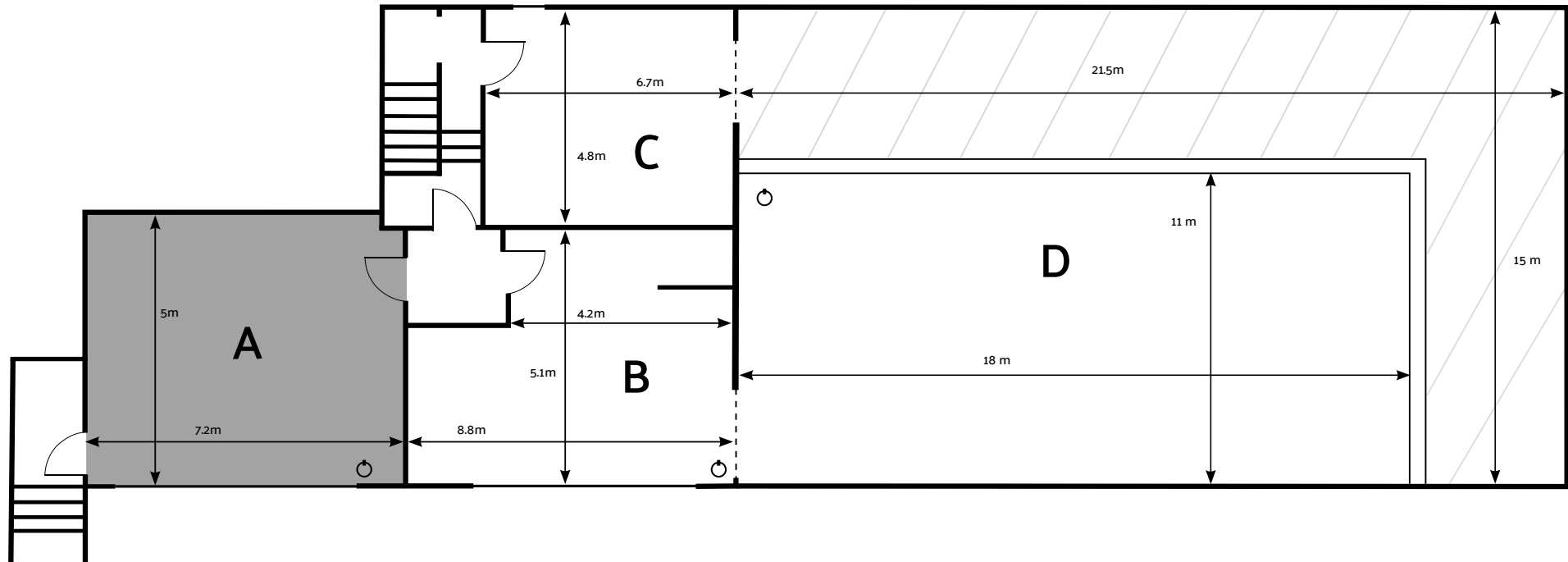
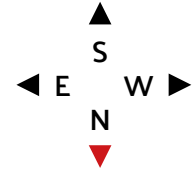
Raised platform height:
tbc (decking)

See floorplan below for further info



The Roof

340 sqm / 3,660 sqft



Space A

Total area: 36 sqm / 387 sqft
Ceiling height: 3.7m - 2.6m
(sloped)

Space B

Total area: 44 sqm / 473 sqft
Ceiling height: 3.7m - 2.6m (sloped)
5.1 m x 8.8m

Space C

Total area: 32 sqm / 344 sqft
Ceiling height: 3.3m
4.9m x 6.8m
16ft x 22ft

D= Roof

Total Area: 340 sqm / 3,660 sqft
15m wide x 21.5m long
49ft wide x 70ft long

Total Area: 198 sqm / 2,160 sqft
11m wide x 18m long
36ft wide x 60ft long

Power outlets

Space A: 1 x 32 amp single phase outlets
Space B: 1 x 32 amp single phase outlets
Roof: 3 x 32 amp single phase outlets