



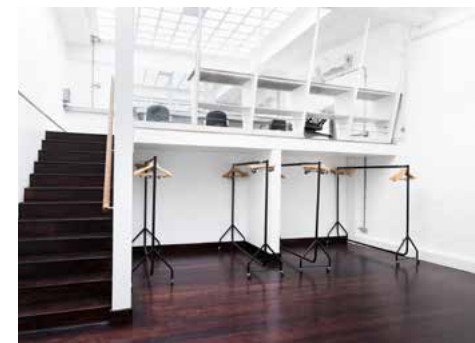
Mezzanine dining



Mezzanine lounge



Mezzanine kitchen



Hair, make up and styling

## Our second largest studio, Studio 02 features:

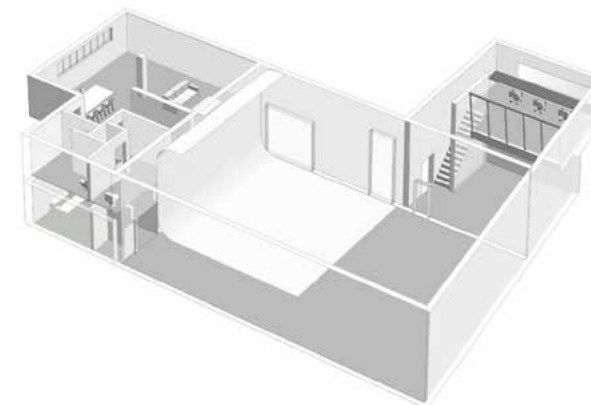
- 9.5m wide infinity cove
- Hair, makeup and styling room
- Kitchen and dining mezzanine
- Toilets and shower

**Total area:**  
380 sqm / 4,090 sqft

**Ceiling height:**  
5.2m / 17.1ft (floor to rig)

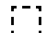
**Cove width x depth x height:**  
9.5m / 31.1ft x 8.7m / 28.6ft x 6.5m / 21.4ft


See floorplan below for further info

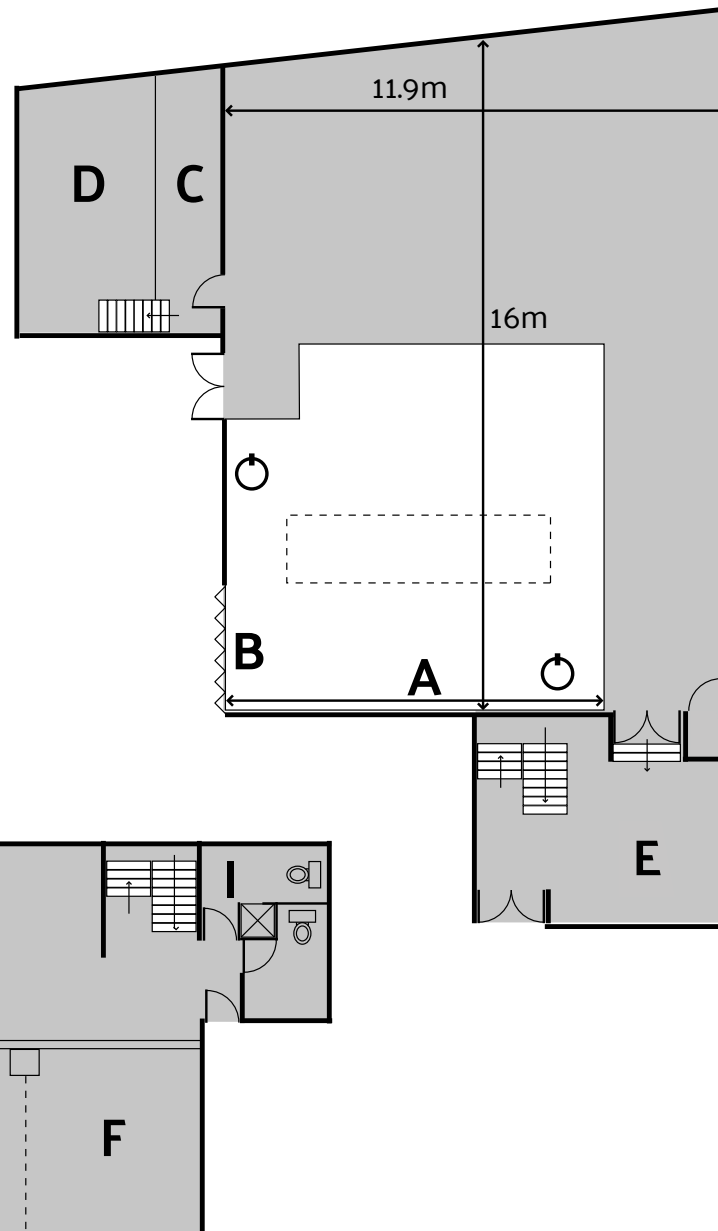


# Studio 02

380 sqm / 4,090 sqft

 **Lighting rig**  
 10 ton certified loading capacity  
 (1 ton per square metre)

 **Power - 1 x 200 amp three phase feed**  
 1 x 125 amp three phase outlets  
 or 6 x 63 amp single phase outlets



**A Wrap over cover**  
 9.5m width x 8.7m depth x 6.5m height  
 31.1ft width x 28.6ft depth x 21.4ft height

**B Shutter Doors**  
 (Can connect to Studio 01)

**C Styling room**  
 4.9m x 5.4m  
 16.2ft x 17.8ft

**D Hair and makeup area**  
 4.2m x 5.4m  
 13.9ft x 17.8ft

**E Lounge**

## Mezzanine floor

**F Dining area**

**G Kitchen**

**H Lounge**

**I Toilets and shower**